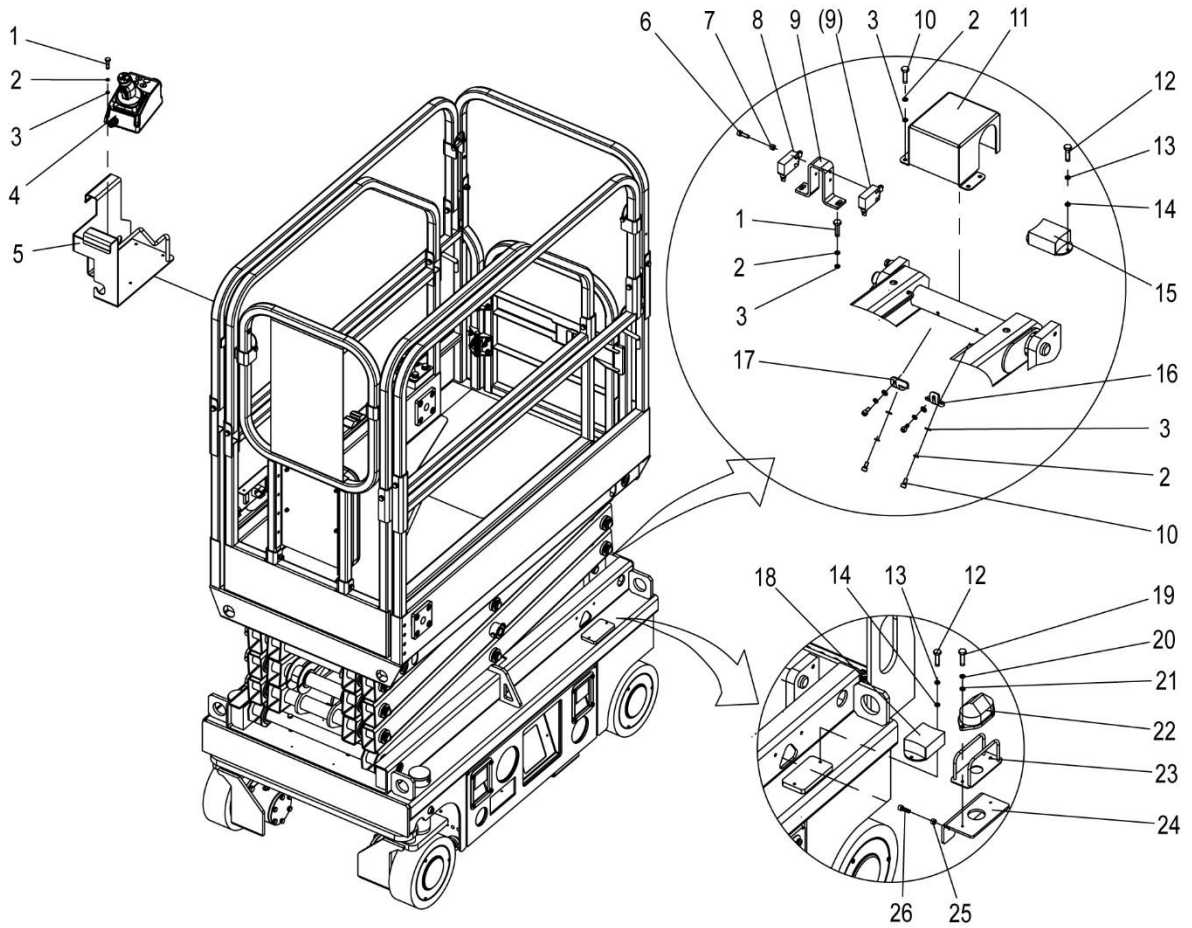


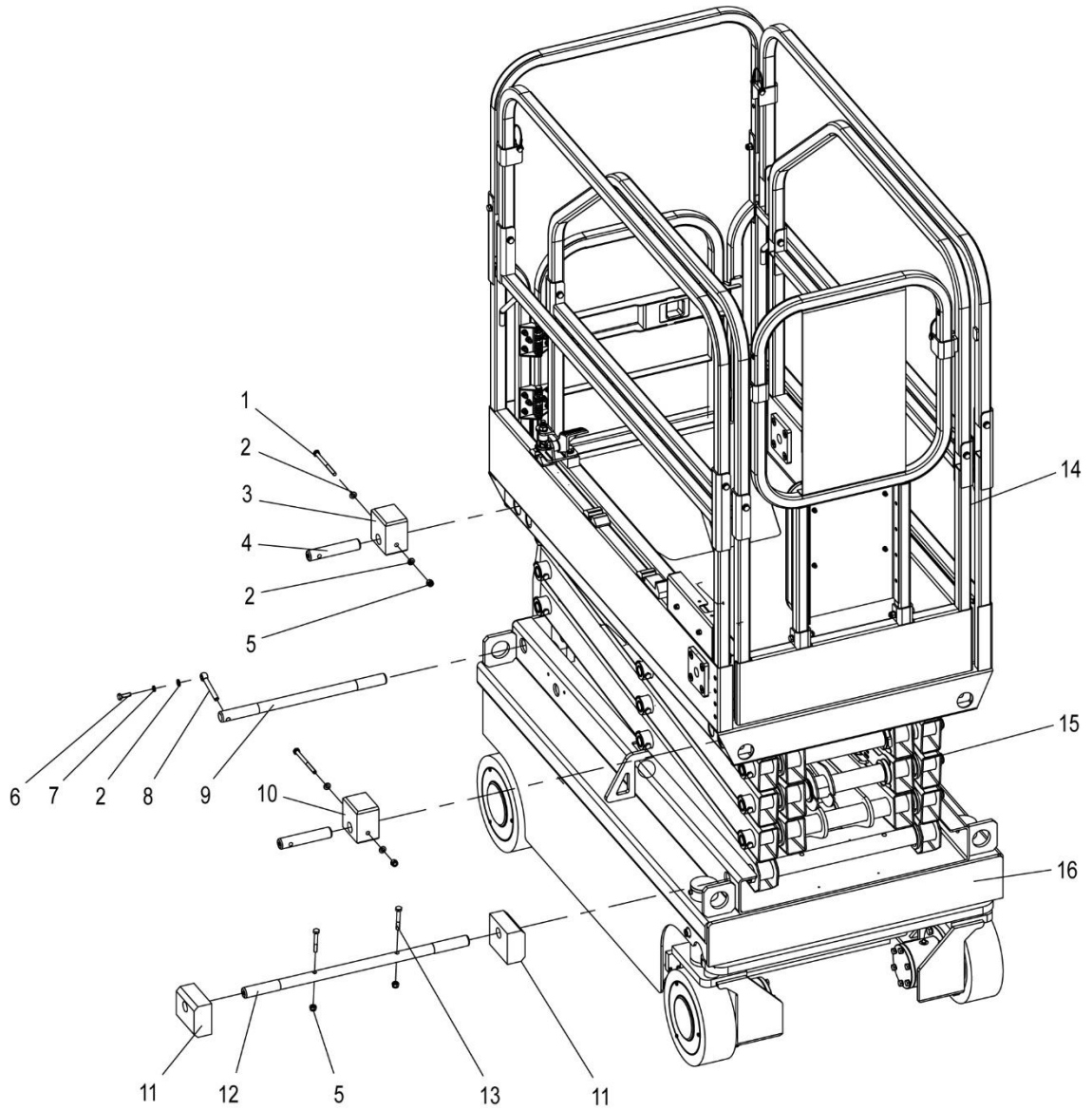
## ZS1530 Series Accessory Installation



## ZS1530 Series Accessory Installation

NO.	Material No.	Item and Spec	Units	Remark
1	1040100055	Screw M6×20-8.8	4	GB/T70.1-2000
2	1040300051	Washer 6	12	GB/T97.1-2002
3	1040300062	Washer 6	12	GB/T93-1987
4	1020104278	Platform control assembly	1	
5	00775606300411010	Platform control box	1	
6	1040100618	Screw M4×35	6	GB/T818-2000
7	1040201605	Locknut M4-8	6	GB/T889.1-2000
8	1020521041	Limit switch	3	
9	00775206310201030	Limit bracket	1	
10	1040100127	Screw M6×12-8.8	8	GB/T70.1-2000
11	00775206310201010	Limit guard	1	
12	1040102341	Screw M5×12-8.8	6	GB/T70.1-2000
13	1040300048	Washer 5	6	GB/T97.1-2002
14	1040300060	Washer 5	6	GB/T93-1987
15	1020521469	Inclination switch	1	
16	00775200001001060	Limit block	2	
18	1021404034	Angle sensor	1	
19	1040100618	Screw M4×16-8.8	6	GB/T818-2000
20	1040300044	Washer 4	6	GB/T93-1987
21	1040301697	Washer 4	6	GB/T97.1-2002
22	1029906635	LED Strobe light	2	
23	1029906206	Shield	3	
24	00775206310201020	Lamp holder	3	
25	1040200867	Nut M5	6	GB/T889.1-2000
26	1040100055	Screw M5×20-8.8	6	GB/T70.1-2000

## ZS1530 Series Pin Installation

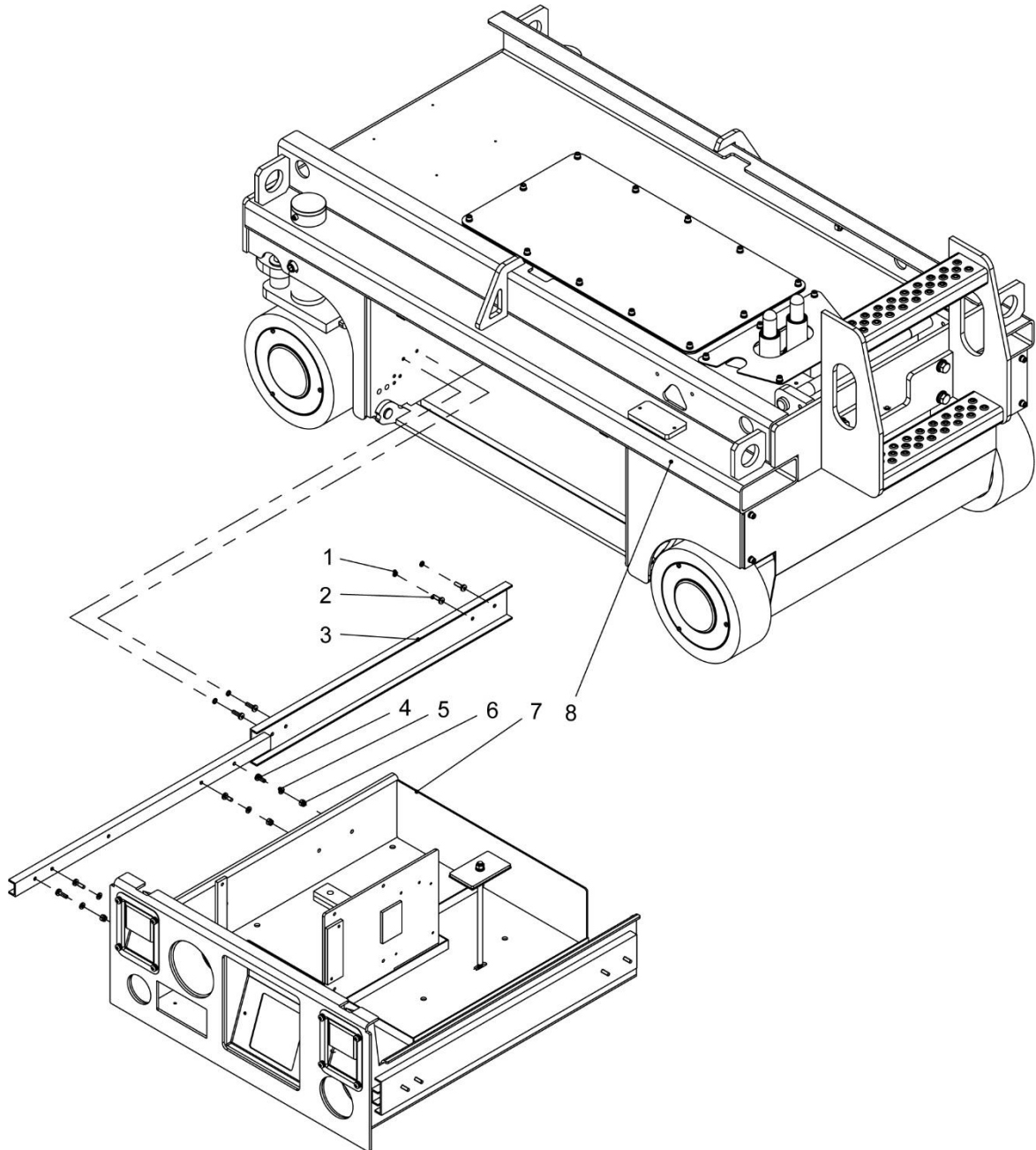


## ZS1530 Series Pin Installation

NO.	Material No.	Item and Spec	Units	Remark
1	1040000431	Bolt M8×100-8.8	4	GB/T5783-2000
2	1040300066	Washer 8	9	GB/T97.1-2002
3	00775200001001080	Upper sliding block	2	
4	00775200001001030	Upper stationary axle	4	
5	1040200503	Nut M8	6	GB/T889.1-2000
6	1040000288	Bolt M8×25-8.8	1	GB/T5783-2000
7	1040300063	Washer 8	1	GB/T93-1987
8	00775600000001050	Articulated pin	1	
9	00775200001001050	Lower stationary axle	1	
10	00775200001001020	Upper sliding block	2	
11	00775200001001070	Lower sliding block	2	
12	00775200001001040	Lower sliding axle	1	
13	1040000469	Bolt M8×55-8.8	2	GB/T5783-2000
14	00775200100000000	Work platform	1	
15	00775200310000000	Scissor arm	1	
16	00775202800000000	Chassis (ZS1530DC)	1	
	00775202810000000	Chassis (ZS1530DC-Li)	1	

## ZS1530 Series Chassis Tray

CHASSIS

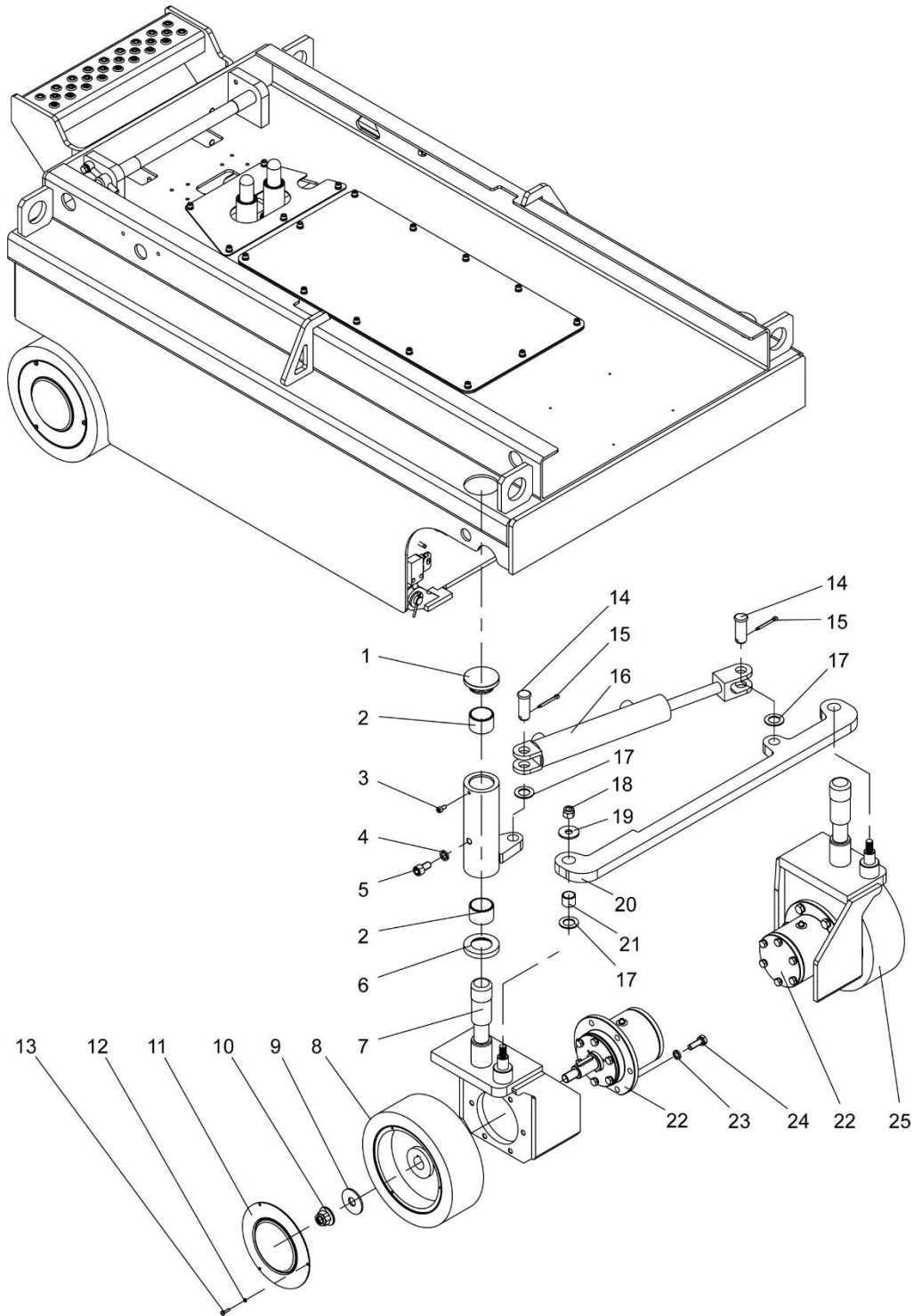


## ZS1530 Series Chassis Tray

NO.	Material No.	Item and Spec	Units	Remark
1	1040300062	Washer 6	8	GB/T93-1987
2	1040104045	Screw M6×20-8.8	8	GB/T818-2000
3	1039905229	Slide	2	
4	1040100620	Screw M6×16-8.8	8	GB/T818-2000
5	1040300051	Washer 6-200HV	8	GB/T97.1-2002
6	1040200506	Nut M6-8	8	GB/T889.1-2000
7	00775202800800000	Tray (ZS1530DC)	1	
	00775202810400000	Tray (ZS1530DC-Li)	1	
8	00775202800200000	Frame (ZS1530DC)	1	
	00775202810200000	Frame (ZS1530DC-Li)	1	
9	1040300062	Washer 6	8	GB/T93-1987

## ZS1530DC Front-wheel Steering System

CHASSIS



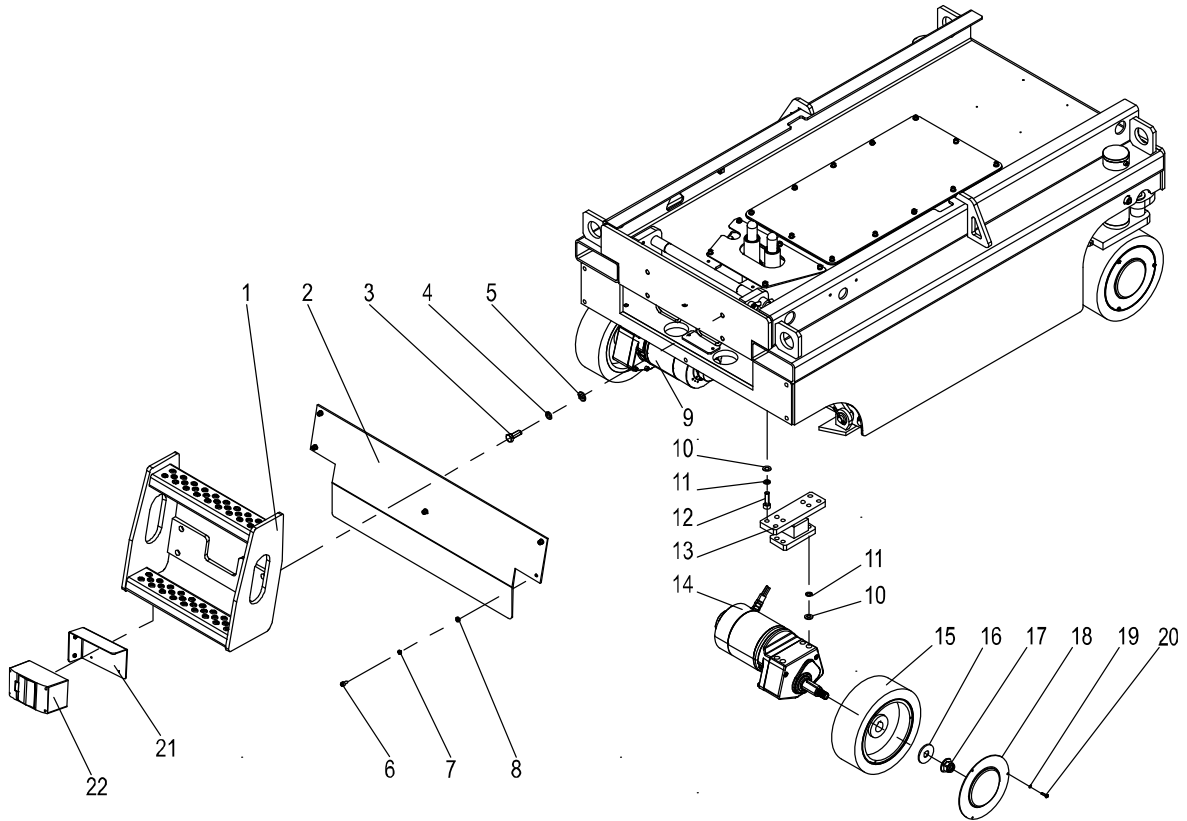
## ZS1530DC Front-wheel Steering System

NO.	Material No.	Item and Spec	Units	Remark
1	00775302800001020	End cover	2	
2	1054400310	Composite bush	4	
3	1040100127	Screw M6×12-8.8	2	GB/T70.1-2000
4	1040300054	Washer 12	2	GB/T93-1987
5	1040100157	Screw M12×20-8.8	1	GB/T70.1-2000
6	00775302800001030	Wearing ring	2	
7	00775202802400000	Right steering wheel carrier	1	
8	1030800683	Tire	4	
9	1040300247	Washer 16-200HV	4	GB/T96.1-2002
10	1040200742	Nut M16×1.5-10	4	GB/T6183.2-2000
11	00775202800001080	Cover	4	
12	1040300044	Washer 4	12	GB/T93-1987
13	1040100618	Nut M4×16-8.8	12	GB/T818-2000
14	1040500038	Pin B20×50	2	GB/T882-1986
15	1040500394	Split pin 5×40	2	GB/T91-2000
16	1010201475	Steering cylinder	1	
17	00775302800001050	Copper washer I	4	
18	1040200507	Nut M12-8	2	GB/T889.1-2000
19	1040300081	Washer 12-140HV	2	GB/T96.1-2002
20	00775202800001030	Steering Linkage	1	
21	1054400339	Composite bush	2	
22	00775202802600000	Front-wheel bearing chock assembly	2	
23	1040300067	Washer 10	12	GB/T93-1987
24	1040001680	Bolt M10×30-8.8	12	GB/T5783-2000
25	00775202802200000	Left steering wheel carrier	1	



## ZS1530DC Series Ladder

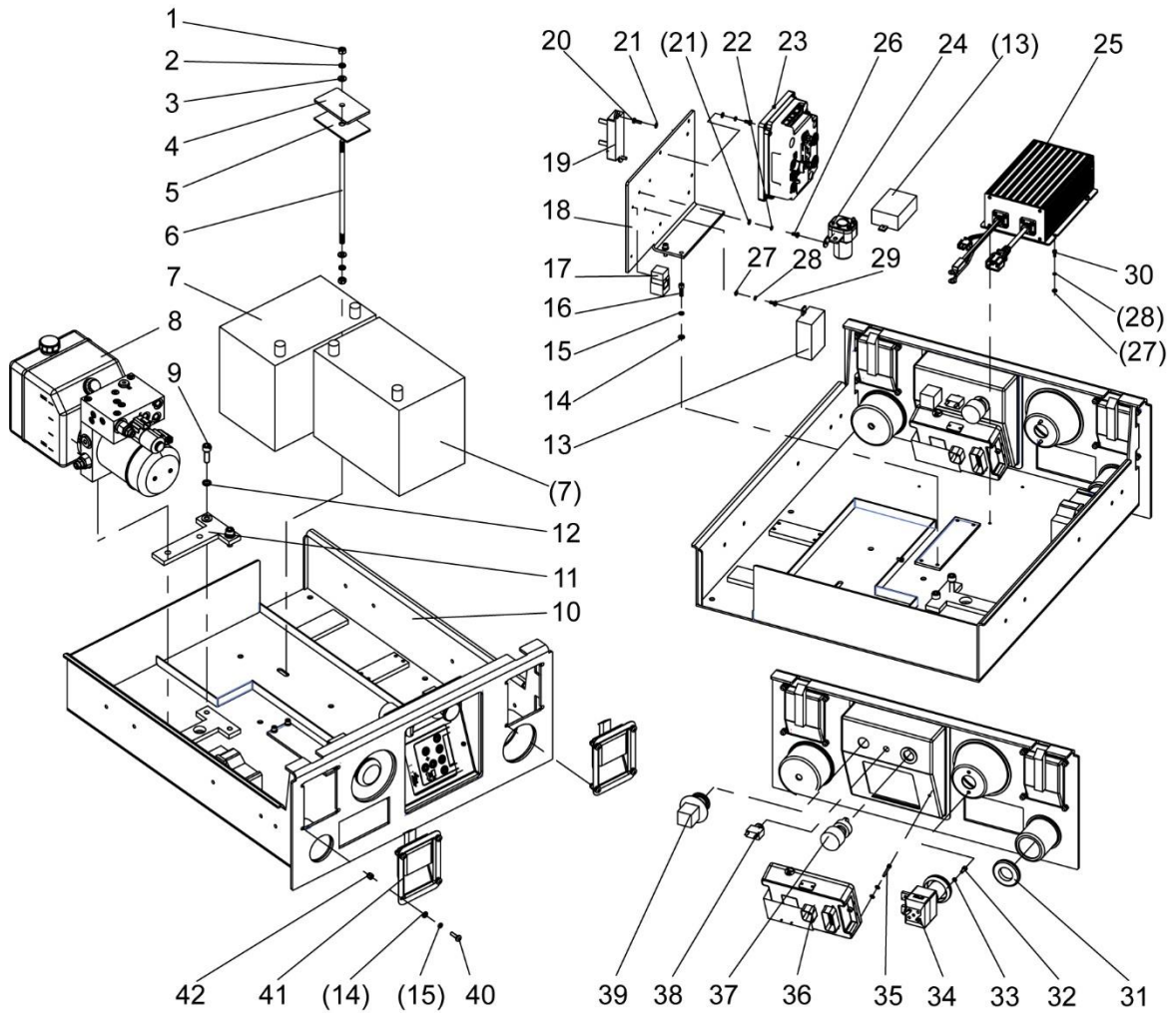
CHASSIS



## ZS1530DC Series Ladder

NO.	Material No.	Item and Spec	Units	Remark
1	00775202803000000	Ladder	1	
2	00775202800001150	Sealing plate I	1	
3	1040000108	Bolt M12×30-8.8	4	GB/T5783-2000
4	1040300054	Washer12	4	GB/T93-1987
5	1040300526	Washer12	4	GB/T97.1-2002
6	1040100127	Screw M6×12-8.8	5	GB/T70.1-2000
7	1040300062	Washer 6	5	GB/T93-1987
8	1040300051	Washer 6	5	GB/T97.1-2002
9	1020099123	Left motor	1	Containing hexagon socket bolt 3/8"-24UNF×1-1/4"L
10	1040300061	Washer 10-200HV	16	GB/T97.1-2002
11	1040300067	Washer 10	16	GB/T93-1987
12	1040002435	Bolt M10×35-8.8	8	GB/T5783-2000
13	00775202801800000	Motor seat	2	
14	1020099122	Right motor	1	Containing hexagon socket bolt 3/8"-24UNF×1-1/4"L
15	1030800538	Tire	2	
16	1040300247	Washer 16-200HV	2	GB/T96.1-2002
17	1040200742	Nut M16×1.5-10	2	GB/T6183.2-2000
18	00775202800001080	Cover	2	
19	1040300044	Washer 4	6	GB/T93-1987
20	1040100618	Screw M4×16-8.8	6	GB/T818-2000
21	00775202800001130	Box holder	1	
22	1020605443	Residual current circuit breaker	1	

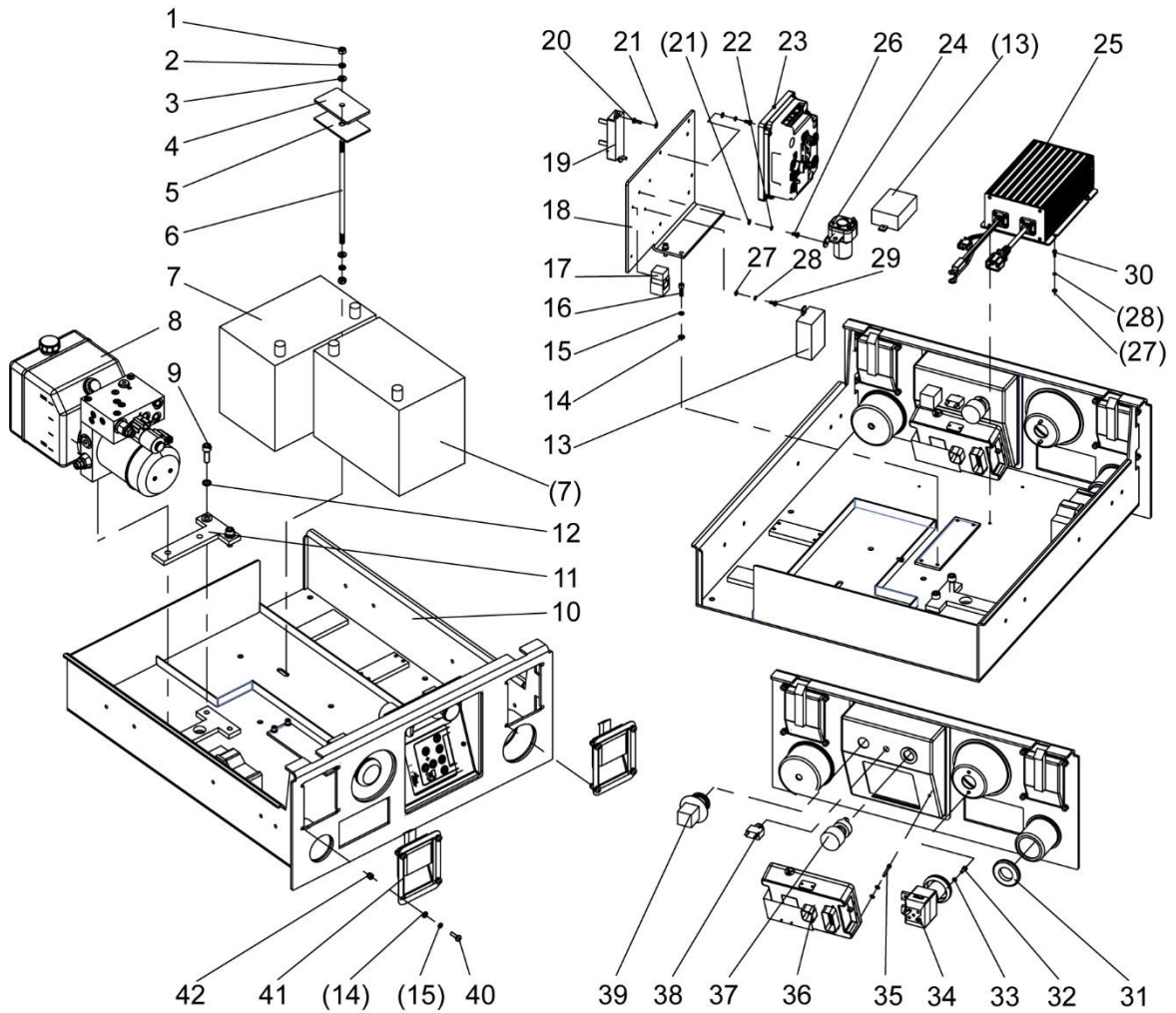
## ZS1530DC Tray



## ZS1530DC Tray

NO.	Material No.	Item and Spec	Units	Remark
1	1040201078	Nut M8	2	GB/T6170-2000
2	1040300063	Washer 8	1	GB/T93-1987
3	1040300066	Washer 8-200HV	1	GB/T97.1-2002
4	00775202800801040	Plate	1	
5	00775202800801050	Cushion rubber	1	
6	00775202800831010	Screw post	1	
7	1020903382	Battery	2	
8	1010002079	Power unit	1	
9	1040100097	Screw M10×30-8.8	4	
10	00775202800810000	Tray box	1	
11	00775202800801020	T-plate II	1	
12	1040300067	Washer 10	2	GB/T93-1987
13	1020605226	Continuous-flow protector	1	
14	1040300051	Washer 6-200HV	18	GB/T97.1-2002
15	1040300062	Washer 6	16	GB/T93-1987
16	1040100055	Screw M6×20-8.8	10	GB/T70.1-2000
17	1020300083	Common relay	1	
18	00775202800821010	Installation pad	1	
19	1020604246	Fuse holder	1	
20	1040102341	Screw M8×12-8.8	2	GB/T70.1-2000
21	1040300048	Washer 5-200HV	4	GB/T97.1-2002
22	1040300060	Washer 5	2	GB/T93-1987

## ZS1530DC Tray

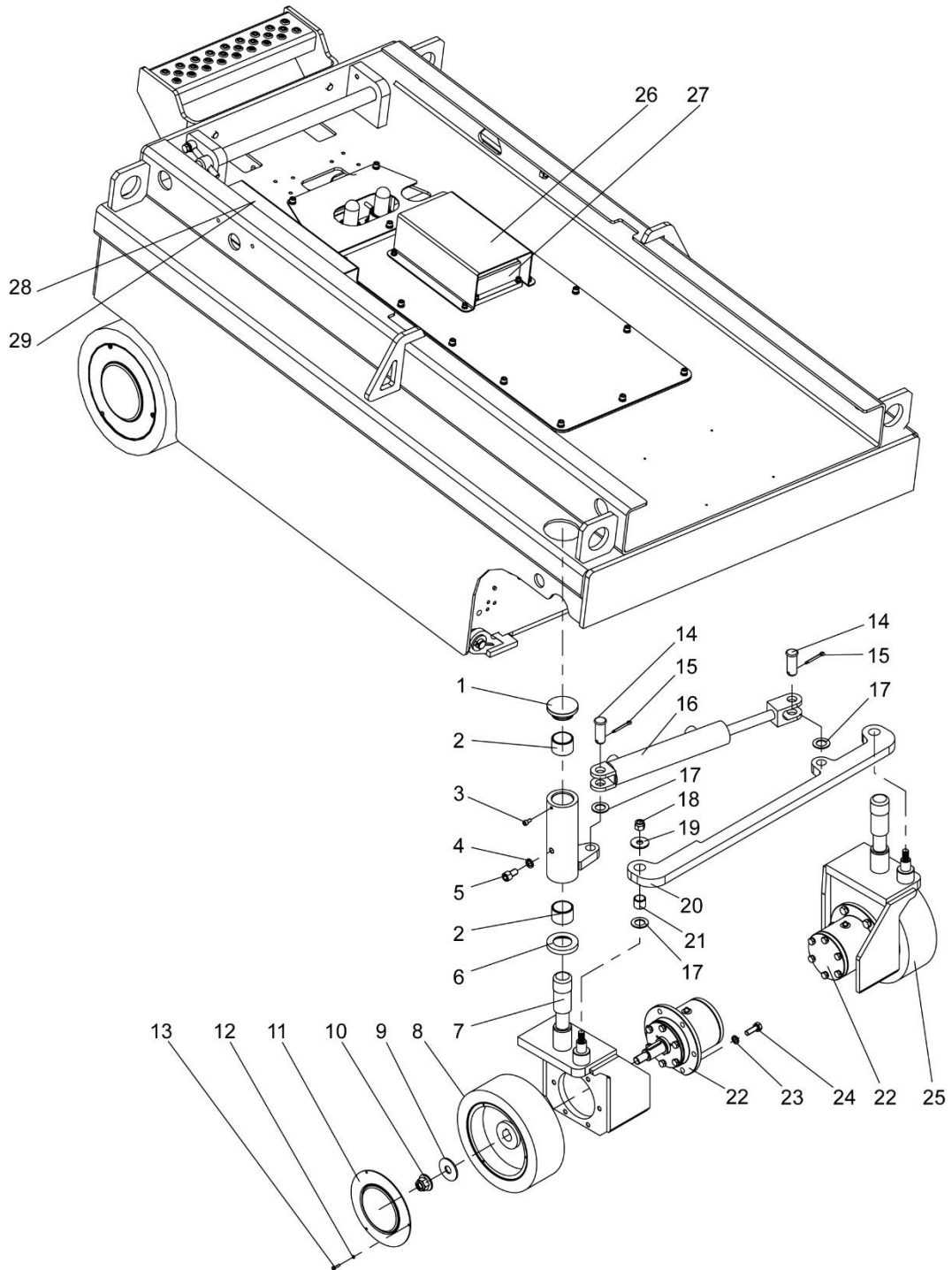


## ZS1530DC Tray

NO.	Material No.	Item and Spec	Units	Remark
23	1020005354	Motor driver	1	
24	1020304603	DC contractor	1	
25	1029907625	Vehicle-mounted battery charger	1	
26	1040100619	Screw M5×10	2	GB/T818-2000
27	1040100617	Screw M4×10-8.8	2	GB/T818-2000
28	1040300044	Washer 4	6	GB/T93-1987
29	1040301697	Washer 4-160HV	6	GB/T97.1-2002
30	1040102168	Screw M4×10	4	GB/T70-1985
31	00775602801601010	Coil III	1	
32	1040300060	Washer 5	2	GB/T93-1987
33	1040102341	Screw M5×12-8.8	2	GB/T70.1-2000
34	1020521277	Main power switch	1	
35	1029804041	Screw M4×25-4.8	2	GB/T70.1-2000
36	1020104088	Ground control assembly	1	
37	1020521389	Key switch	1	
38	1020304979	Breaker	1	
39	1020502039	Emergency stop button	1	
40	1040104045	Screw M6×20-8.8	8	GB/T818-2000
41	1101000131	Panel lock	2	
42	1040200506	Nut	8	GB/T889.1-2000

## ZS1530DC-Li Front-wheel Steering System

CHASSIS



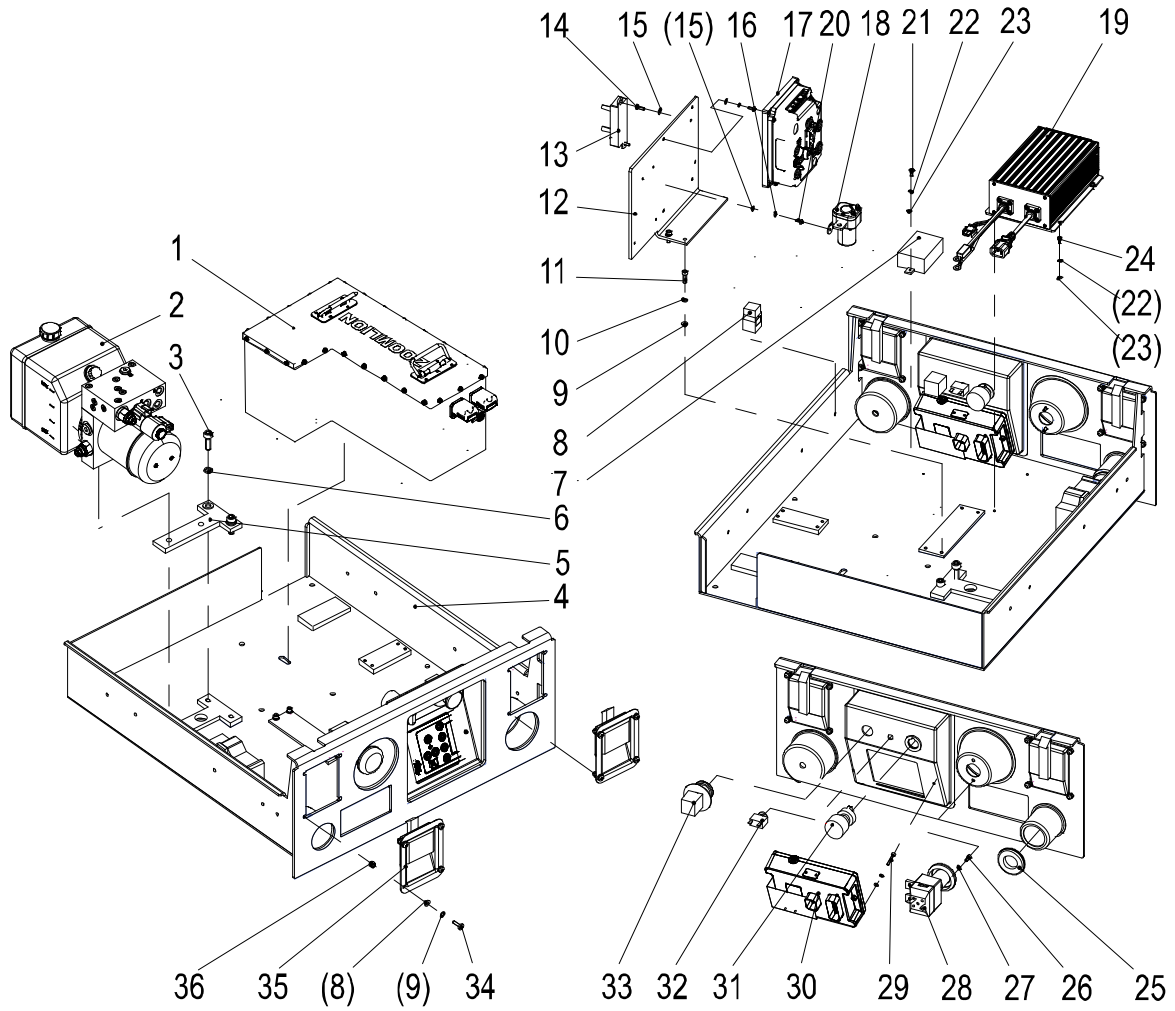
## ZS1530DC-Li Front-wheel Steering System

NO.	Material No.	Item and Spec	Units	Remark
1	00775302800001020	End cover	2	
2	1054400310	Composite bush	4	
3	1040100127	Screw M6×12-8.8	2	GB/T70.1-2000
4	1040300054	Washer 12	2	GB/T93-1987
5	1040100157	Screw M12×20-8.8	1	GB/T70.1-2000
6	00775302800001030	Wearing ring	2	
7	00775202802400000	Right steering wheel carrier	1	
8	1030800683	Tire	4	
9	1040300247	Washer 16-200HV	4	GB/T96.1-2002
10	1040200742	Nut M16×1.5-10	4	GB/T6183.2-2000
11	00775202800001080	Cover	4	
12	1040300044	Washer 4	12	GB/T93-1987
13	1040100618	Nut M4×16-8.8	12	GB/T818-2000
14	1040500038	Pin B20×50	2	GB/T882-1986
15	1040500394	Split pin 5×40	2	GB/T91-2000
16	1010201475	Steering cylinder	1	
17	00775302800001050	Copper washer I	4	
18	1040200507	Nut M12-8	2	GB/T889.1-2000
19	1040300081	Washer 12-140HV	2	GB/T96.1-2002
20	00775202800001030	Steering Linkage	1	
21	1054400339	Composite bush	2	
22	00775202802600000	Front-wheel bearing chock assembly	2	
23	1040300067	Washer 10	12	GB/T93-1987
24	1040001680	Bolt M10×30-8.8	12	GB/T5783-2000
25	00775202802200000	Left steering wheel carrier	1	
26	00775302830001010	Brake cover	1	
27	1020202270	Brake Module	1	
28	00775302830001020	Resistance cover	1	
29	1020605470	Braking resistor	1	



## ZS1530DC-Li Tray

CHASSIS

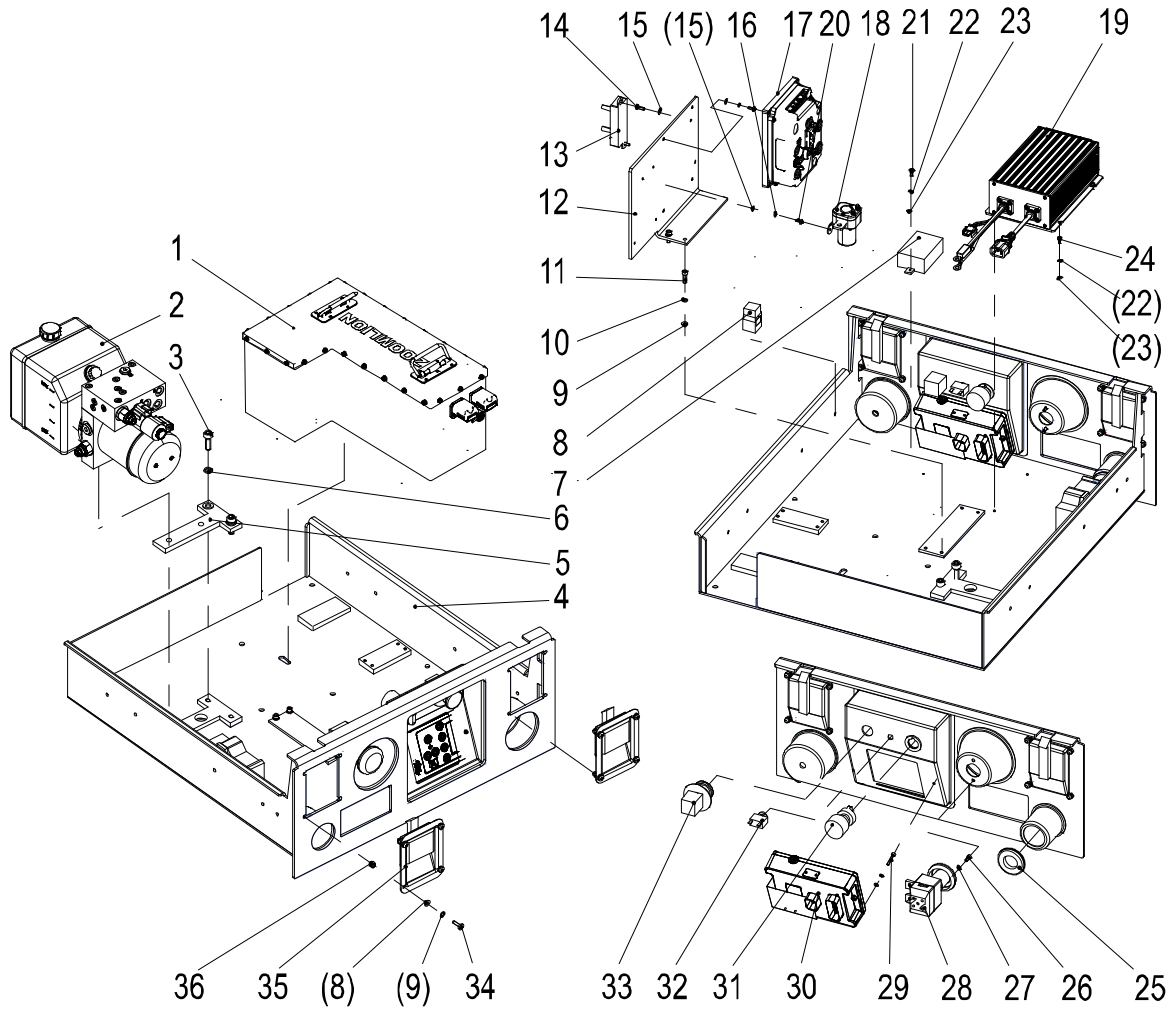


## ZS1530DC-Li Tray

NO.	Material No.	Item and Spec	Units	Remark
1	1020999015	Battery	1	
2	1010002218	Power unit	1	
3	1040100097	Screw M10×30-8.8	4	
4	00775202810410000	Tray box	1	
5	00775202800801020	T-plate II	1	
6	1040300067	Washer 10	2	GB/T93-1987
7	1020605226	Continuous-flow protector	1	
8	1020300083	Common relay	1	
9	1040300051	Washer 6-200HV	18	GB/T97.1-2002
10	1040300062	Washer 6	16	GB/T93-1987
11	1040100055	Screw M6×20-8.8	10	GB/T70.1-2000
12	00775202810421010	Installation pad	1	
13	1020604246	Fuse holder	1	
14	1040102341	Cross Recess Head Screw M5×14-8.8	2	
15	1040300048	Washer 5-200HV	4	GB/T97.1-2002
16	1040300060	Washer 5	2	GB/T93-1987
17	1020005354	Motor driver	1	
18	1020304603	DC contractor	1	

## ZS1530DC-Li Tray

CHASSIS

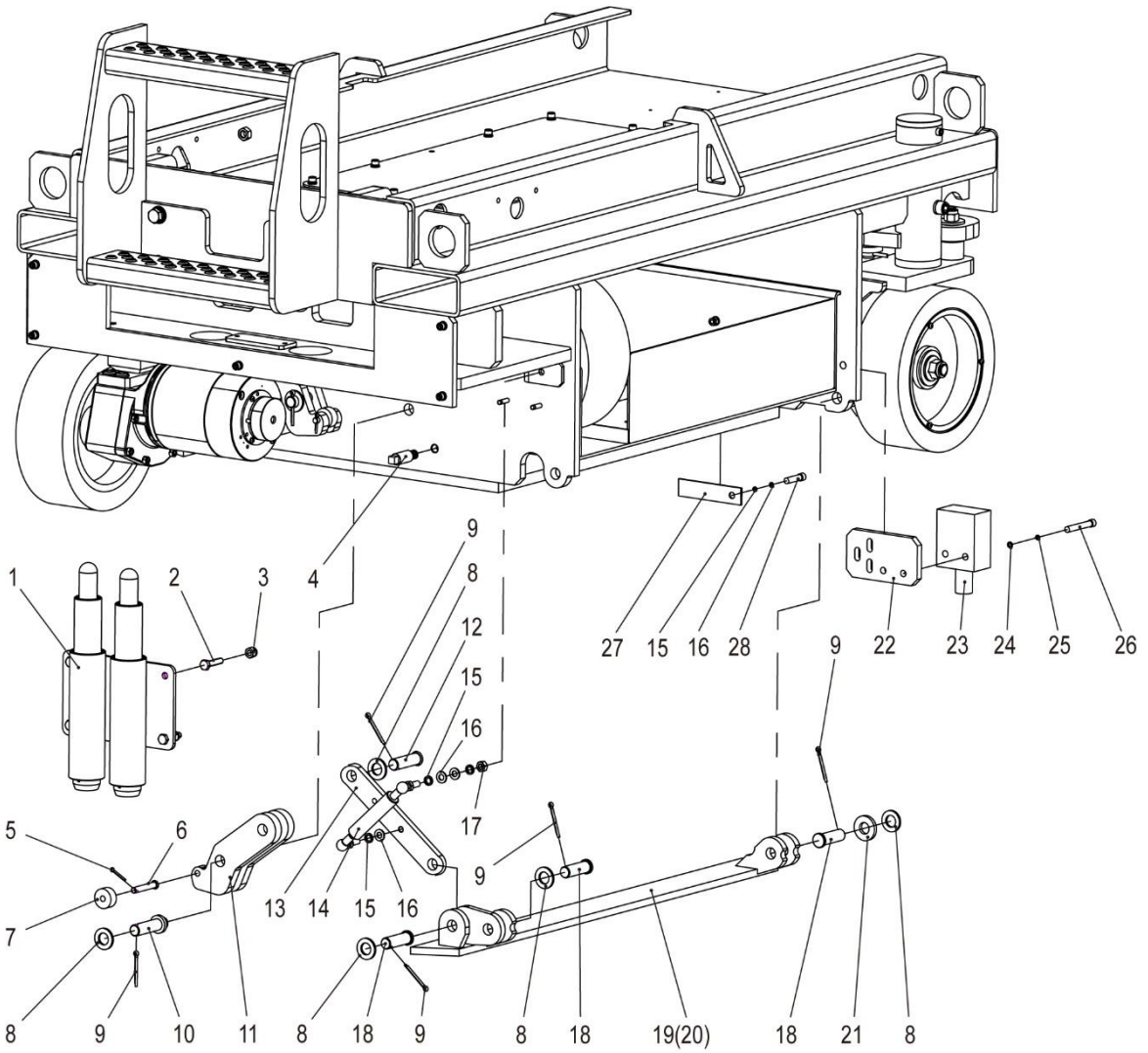


## ZS1530DC-Li Tray

NO.	Material No.	Item and Spec	Units	Remark
19	1029907626	Vehicle-mounted battery charger	1	
20	1040100619	Screw M5×10	2	GB/T818-2000
21	1040100617	Screw M4×10-8.8	2	GB/T818-2000
22	1040300044	Washer 4	6	GB/T93-1987
23	1040301697	Washer 4-160HV	6	GB/T97.1-2002
24	1040102168	Screw M4×10	4	GB/T70-1985
25	00775602801601010	Coil III	1	
26	1040300060	Washer 5	2	GB/T93-1987
27	1040102341	Screw M5×12-8.8	2	GB/T70.1-2000
28	1020521277	Main power switch	1	
29	1029804041	Screw M4×25-4.8	2	GB/T70.1-2000
30	1020104088	Ground control assembly	1	
31	1020521389	Key switch	1	
32	1020304979	Breaker	1	
33	1020502039	Emergency stop button	1	
34	1040104045	Screw M6×20-8.8	8	GB/T818-2000
35	1101000131	Panel lock	2	
36	1040200506	Nut	8	GB/T889.1-2000

### ZS1530 Series Pothole Guard

CHASSIS

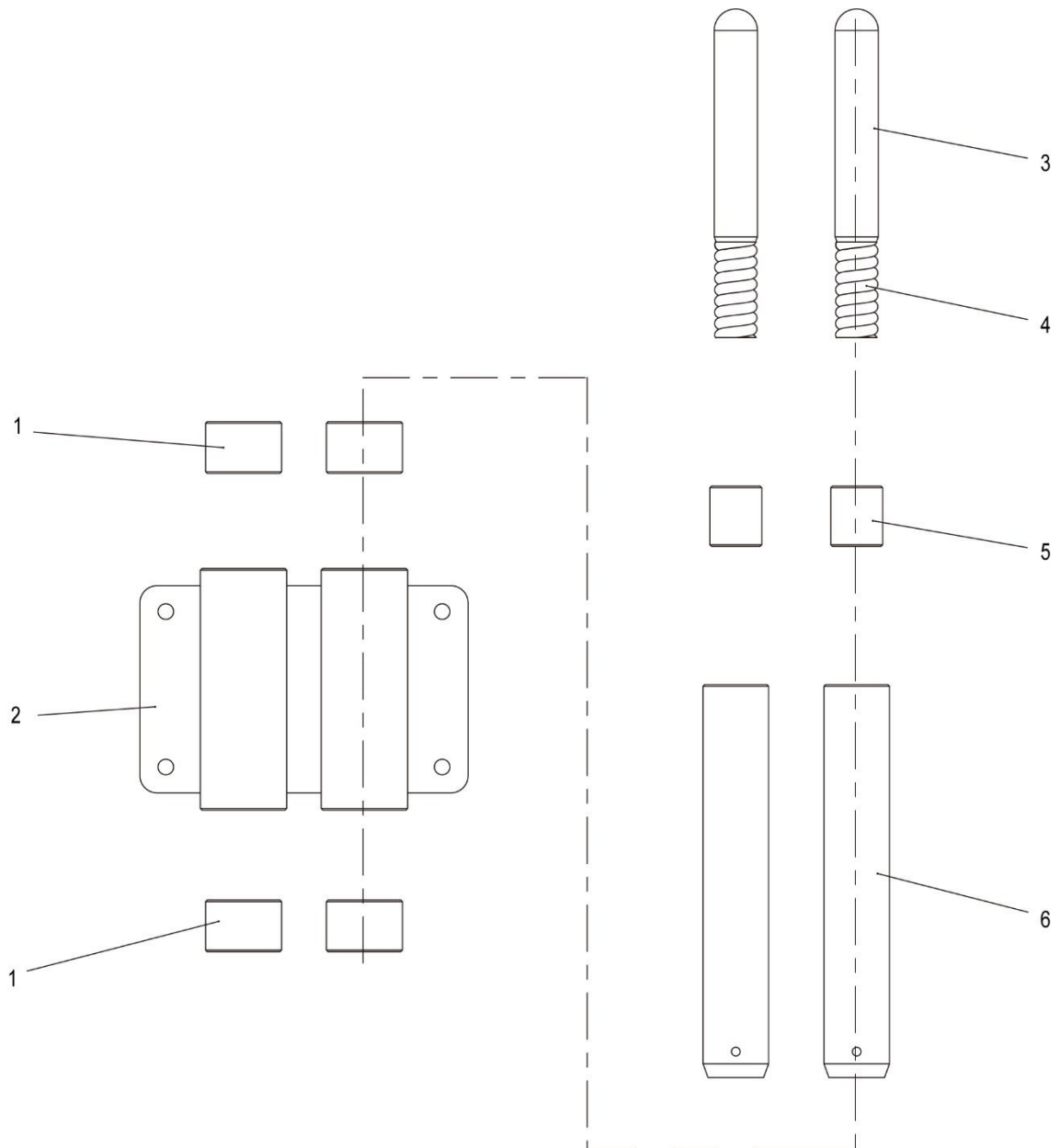


## ZS1530 Series Pothole Guard

NO.	Material No.	Item and Spec	Units	Remark
1	00775202802000000	Guide mechanism	1	
2	1040000689	Bolt M8×35-8.8	4	GB/T5783-2000
3	1040200503	Nut M8	4	GB/T889.1-2000
4	00775202800001010	Limited bolt post	2	
5	1040500212	Split pin 3.2×20	2	GB/T91-2000
6	1040500383	PinB8×50	2	GB/T882-1986
7	00775602800001060	Crank trolley	2	
8	1040300052	Washer 16	10	GB/T97.1-2002
9	1040500054	Pin4×40	10	GB/T91-2000
10	00775202800201190	PinΦ25	2	
11	00775202801600000	Crank	2	
12	1040500066	PinB16×55	2	GB/T882-1986
13	00775202800001020	Crank linkage	2	
14	1110100346	Gas spring	2	
15	1040300063	Washer 8	10	GB/T93-1987
16	1040300066	Washer 8	10	GB/T97.1-2002
17	1040201078	Nut M8	2	GB/T6170-2000
18	1040501520	Pin B16×50	6	GB/T882-2000
19	00775202801200000	Right pothole plate	1	
20	00775202801400000	Left pothole plate	1	
21	00775602800001130	Crank washer	2	
22	00775306320201030	Switch plate	2	
23	1020521041	Limit switch	2	
24	1040300044	Washer 4	4	GB/T93-1987
25	1040301697	Washer 4	4	GB/T97.1-2002
26	1040101189	Screw M4×40-8.8	4	GB/T70.1-2000
27	1029906965	Conduction band	2	
28	1040102717	Screw M8×40	4	GB/T70.3-2000

### ZS2632/ZS2032/ZS1932/ZS1930/ZS1530 Series Guide Mechanism

CHASSIS



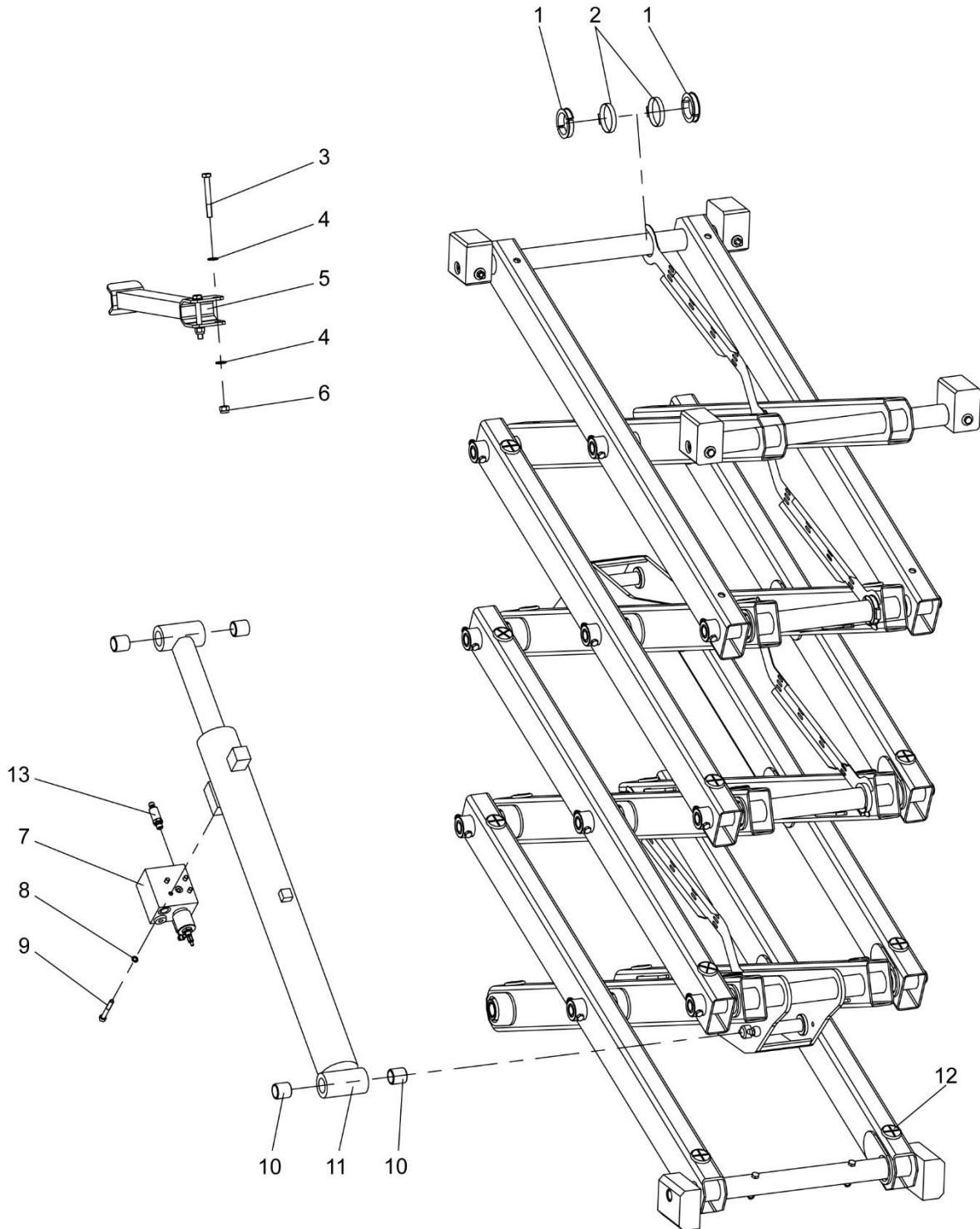
**ZS2632/ZS2032/ZS1932/ZS1930/ZS1530 Series Guide Mechanism**

NO.	Material No.	Item and Spec	Units	Remark
1	1054400310	Composite bush 38×44×30	2	
2	00775402801210000	Guide support	1	
3	00775602801201020	Spring support	1	
4	00775602801201030	Spring	1	
5	1054400308	Composite bush 25×30×35	1	
6	00775602801201010	Guide rod (ZS2032/ZS2632 series)	1	
	00775302802001010	Guide rod (ZS1932/ZS1930 series)	1	
	00775202802001010	Guide rod (ZS1530 series)	1	



## ZS1530 Series Scissor Arm Accessory

SCISSOR ARM

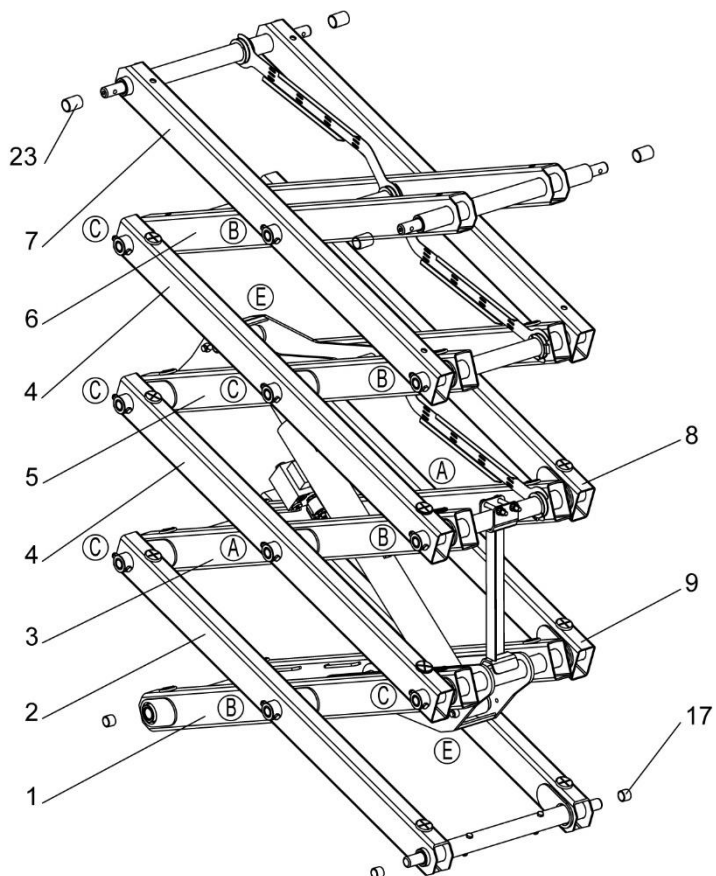
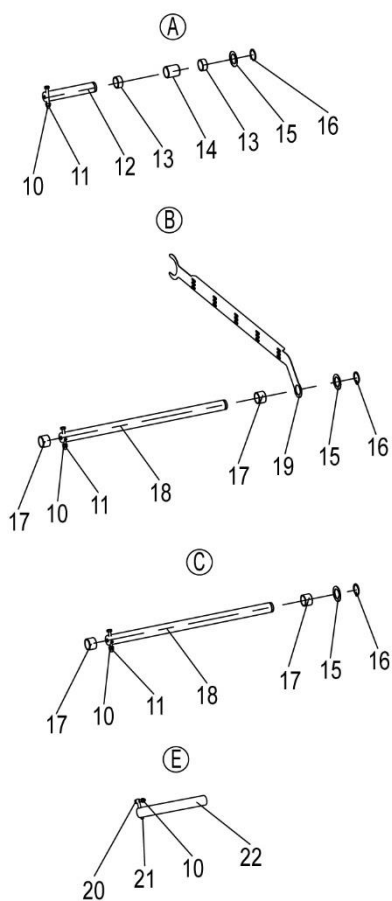


## ZS1530 Series Scissor Arm Accessory

NO.	Material No.	Item and Spec	Units	Remark
1	00775200310001090	Nylon cover II	16	
2	1990202404	Clamp $\phi 40-\phi 60$	8	
3	1040000025	Bolt M10 $\times$ 80-8.8	2	GB/T5782-2000
4	1040300061	Washer 10	4	GB/T97.1-2002
5	00775200312000000	Safety arm	1	
6	1040200504	Nut M10-8	2	GB/T889.1-2000
7	1010308648	Cylinder control valve	1	
8	1040300063	Washer 8	4	GB/T93-1987
9	1040102034	Screw M8 $\times$ 60-10.9	4	GB/T70.1-2000
10	1054400341	Composite bush	4	
11	1010201561	Lower lift cylinder	1	
12	00775600300001110	Plastic pad	24	
13	1021403993	Pressure sensor	1	

## ZS1530 Series Scissor Arm Pin

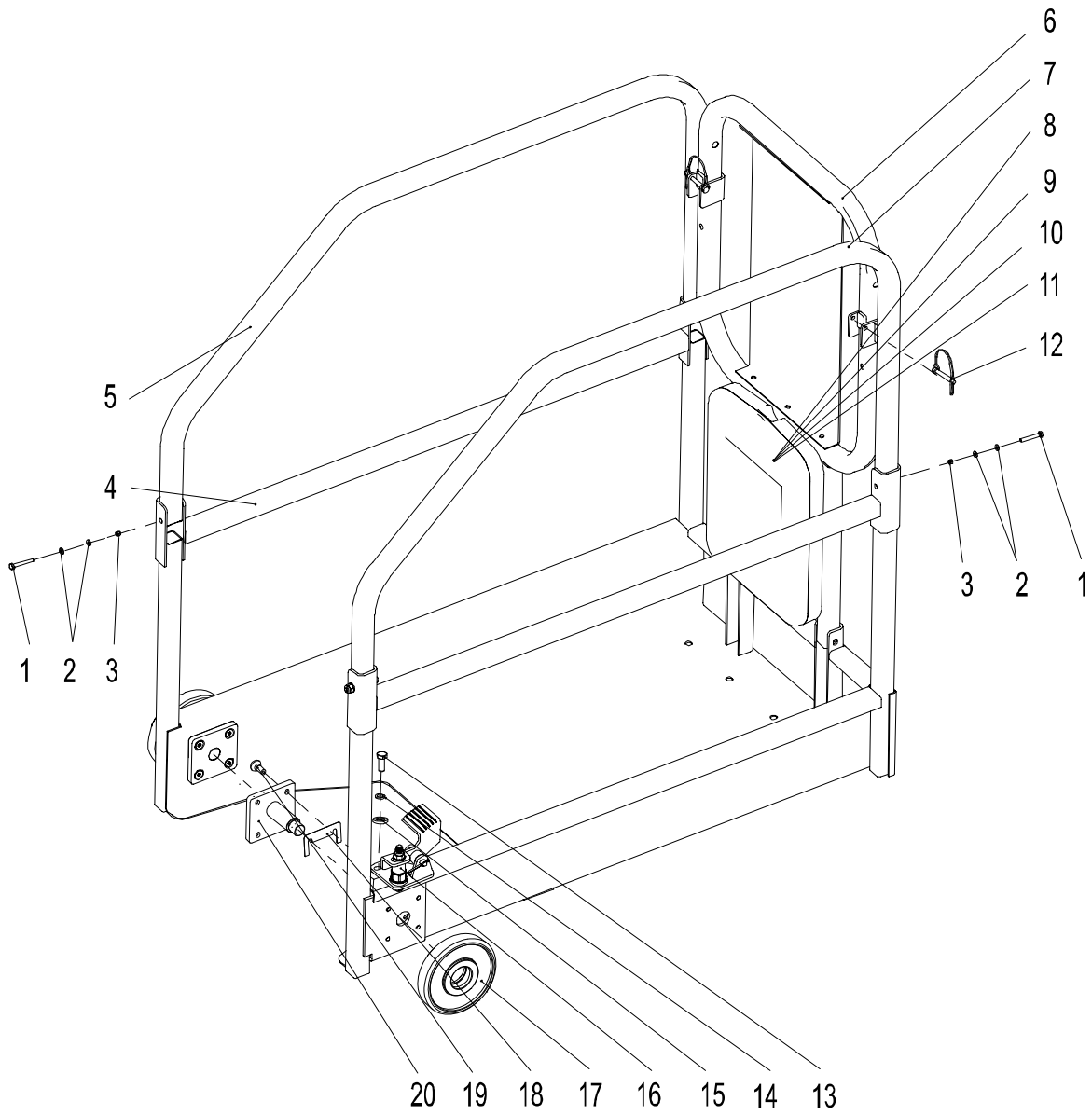
SCISSOR ARM



## ZS1530 Series Scissor Arm Pin

NO.	Material No.	Item and Spec	Units	Remark
1	00775200310400000	Internal scissor arm I	1	
2	00775200310200000	External scissor arm I	1	
3	00775200310600000	Internal scissor arm II	1	
4	00775200311200000	External scissor arm II	2	
5	00775200310800000	Internal scissor arm III	1	
6	00775200311000000	Internal scissor arm IV	1	
7	00775200311600000	External scissor arm IV	1	
8	00775200311800000	External scissor arm V	1	
9	00775200311400000	External scissor arm III	1	
10	1040200503	Nut M8-8	13	GB/T889.1-2000
11	1040000469	Bolt M8×55-8.8	11	GB/T5782-2000
12	00775200310001020	Axle II	2	
13	1054400340	Composite bush 30×25×20	4	
14	00775200310001060	Spacer, bearing	2	
15	00775200310001100	Gasket	11	
16	1040300154	Retaining ring 25	11	GB/T894.1-1986
17	1054400341	Composite bush 30×25×30	26	
18	00775200310001010	Axle I	9	
19	00775200310001070	End pipe trunking	4	
20	1040000689	Bolt M8×35-8.8	2	GB/T5782-2000
21	00775600000001050	Articulated pin	2	
22	00775200310001030	Axle III	2	
23	1054400342	Composite bush 30×25×50	4	

ZS1530 Series Extension Deck Installation

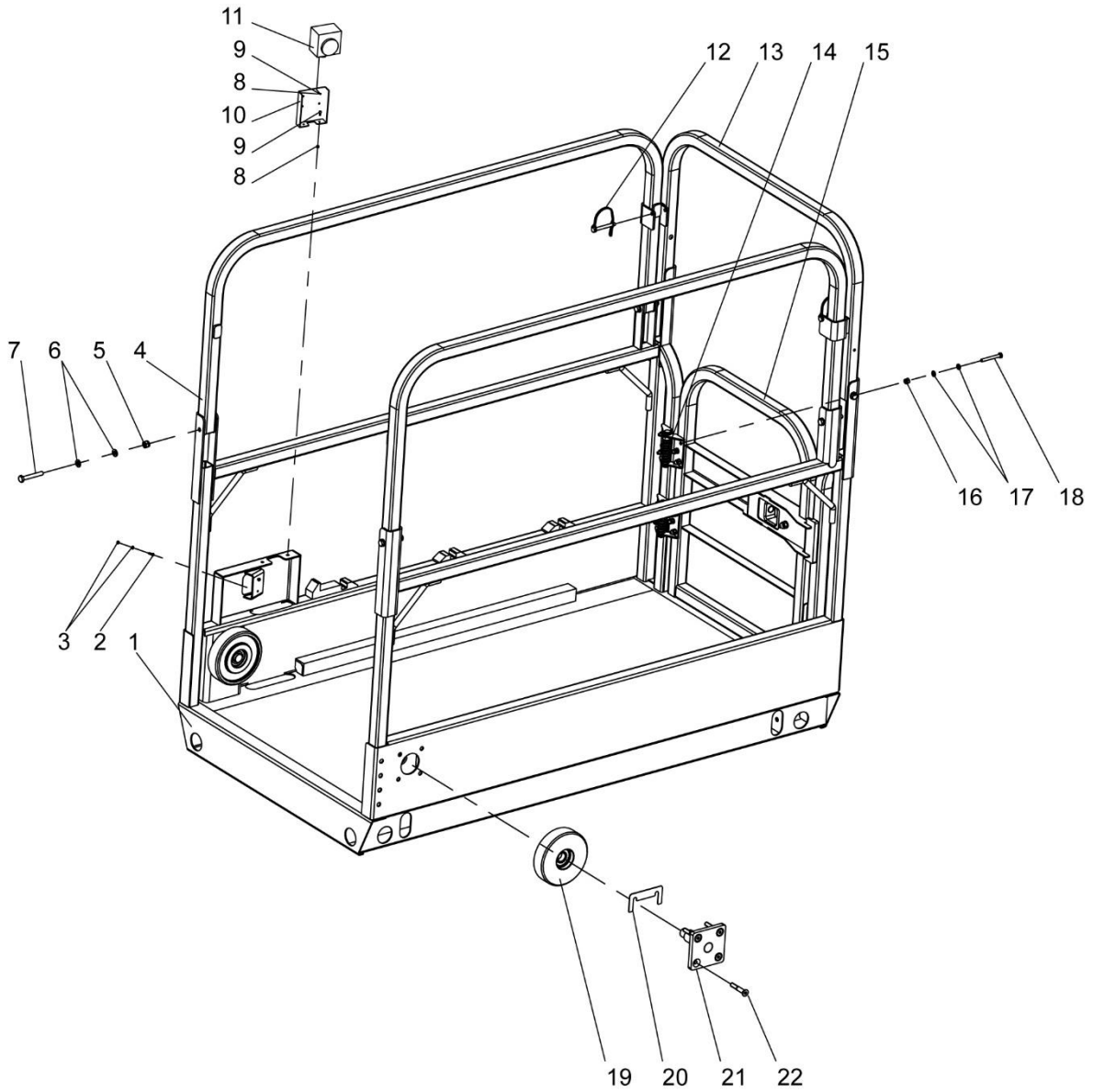


WORK PLATFORM

## ZS1530 Series Extension Deck Installation

NO.	Material No.	Item and Spec	Units	Remark
1	1040000469	Bolt M8×55-8.8	6	GB/T5783-2000
2	1040300066	Washer 8	12	GB/T97.1-2002
3	1040200503	Nut M8-8	6	GB/T889.1-2000
4	00775200101200000	Lower components	1	
5	00775200102200000	Guard rails III	1	
6	00775200102000000	Guard rails I	1	
7	00775200101800000	Guard rails II	1	
8	1999904986	Storage box	1	
9	1040102341	Screw M5×12-8.8	4	GB/T70.1-2000
10	1040300048	Washer 5	4	GB/T97.1-2002
11	1040200867	Nut M5	4	GB/T889.1-2000
12	1100400025	D Pin 6.3×55	2	
13	1040000114	Bolt M10×25	2	GB/T5783-2000
14	1040300067	Washer 10	2	GB/T93-1987
15	1040300061	Washer 10	2	GB/T97.1-2002
16	00775600100800000	Pedal	1	
17	00775600102600000	Pulley assembly	2	
18	00775600100001020	Gasket I	2	
19	1040102718	Screw M8×50	8	GB/T70.1-2000
20	00775600102400000	Platform pin mounting base	2	

## ZS1530 Series Platform Installation

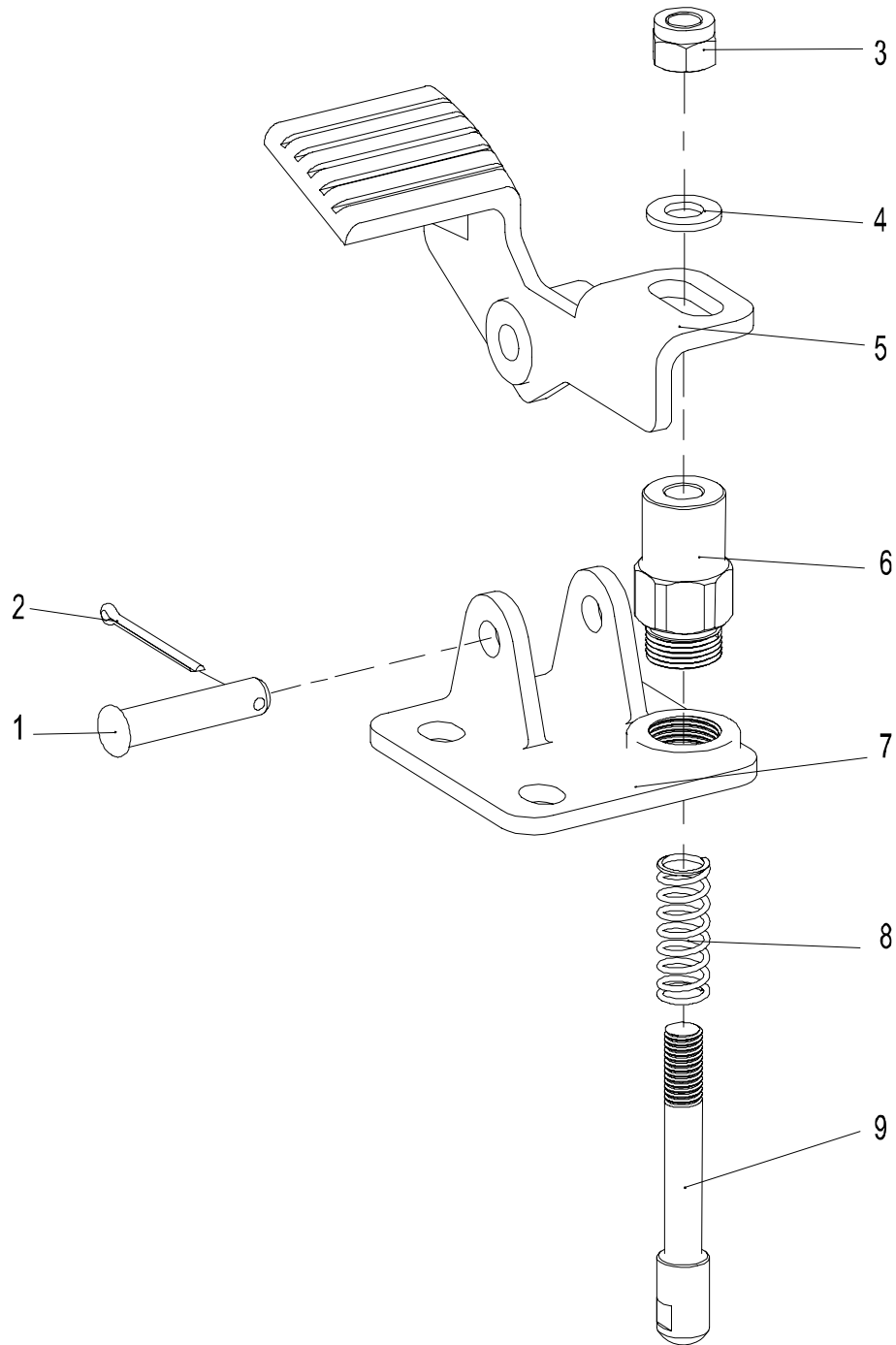


### ZS1530 Series Platform Installation

NO.	Material No.	Item and Spec	Units	Remark
1	00775200102800000	Lower components	1	
2	1040101640	Screw M3×10-A2-70	1	GB/T818-2000
3	1040201166	Nut M3-A2-70	2	GB/T6170-2000
4	00775200102400000	Guard rails IV	2	
5	1040200503	Nut M8-8	4	GB/T889.1-2000
6	1040300066	Washer 8	10	GB/T97.1-2002
7	1040000469	Bolt M8×55-8.8	6	GB/T5782-2000
8	1040200867	Nut M5	6	GB/T889.1-2000
9	1040102341	Screw M5×12-8.8	6	GB/T70.1-2000
10	00775606300801010	Power mounting plate	1	
11	00775206650810000	Platform AC assembly	1	
12	1100400025	D Pin 6.3×55	2	
13	00775200100800000	Guard rails III	1	
14	1101000163	Spring hinge	2	
15	00775200101000000	Platform gate	1	
16	1040200506	Nut M6-8	12	GB/T889.1-2000
17	1040300051	Washer 6	24	GB/T97.1-2002
18	1040002803	Bolt M6×50-8.8	12	GB/T5782-2000
19	00775600102200000	Mounting pulley assembly	2	
20	00775600100001020	Gasket I	2	
21	00775600102400000	Platform pin mounting base	2	
22	1040102718	Screw M8×50-8.8	8	GB/T70.3-2000



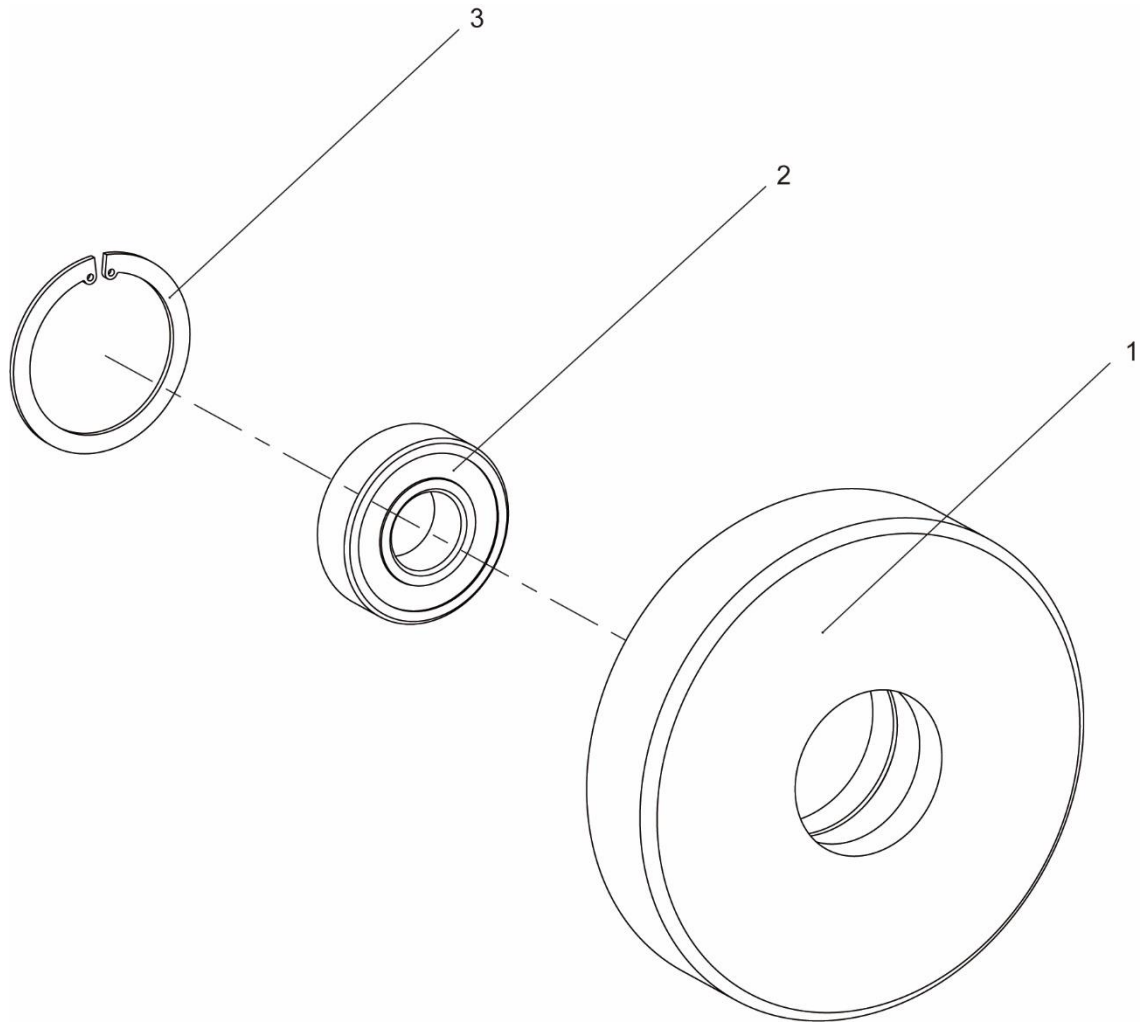
## Pedal Installation



**Pedal Installation**

<b>NO.</b>	<b>Material No.</b>	<b>Item and Spec</b>	<b>Units</b>	<b>Remark</b>
1	1040500606	Pin B10×45	1	GB/T882-2008
2	1040500214	Split pin 3.2×40	1	GB/T91-2000
3	1040200504	Nut M10-8	1	GB/T889.1-2000
4	1040300061	Washer 10	1	GB/T97.1-2002
5	00775600100801020	Pedal	1	
6	00775600100801040	Sleeve	1	
7	00775600100801050	Plate	1	
8	00775600100801030	Spring	1	
9	00775600100801060	Bayonet lock	1	

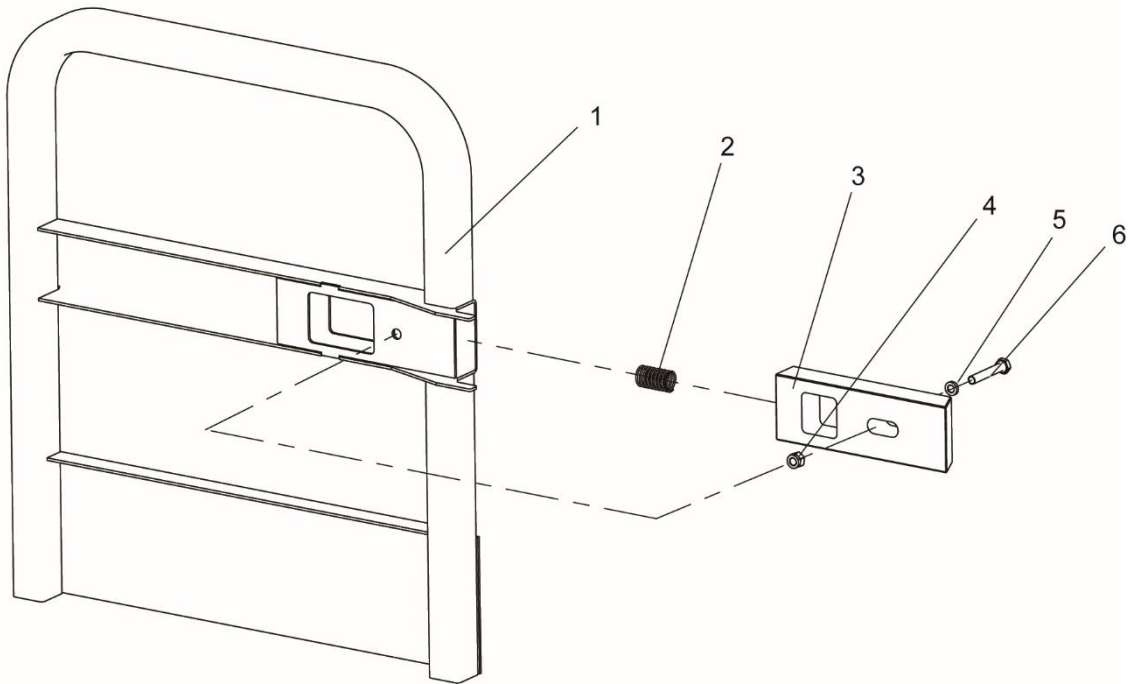
**Platform Pulley Installation**



**Platform Pulley Installation**

<b>NO.</b>	<b>Material No.</b>	<b>Item and Spec</b>	<b>Units</b>	<b>Remark</b>
1	1040300082	Retaining ring 47	1	GB/T893.1-1986
2	1050201257	Bearing 6204-2RS	1	GB/T276-1994
3	00775600102201010	Platform mounting pulley	1	

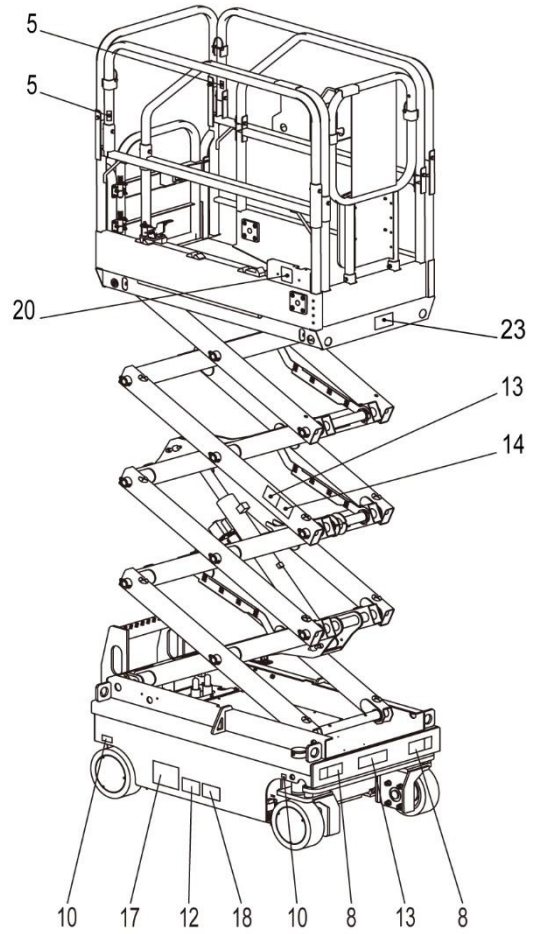
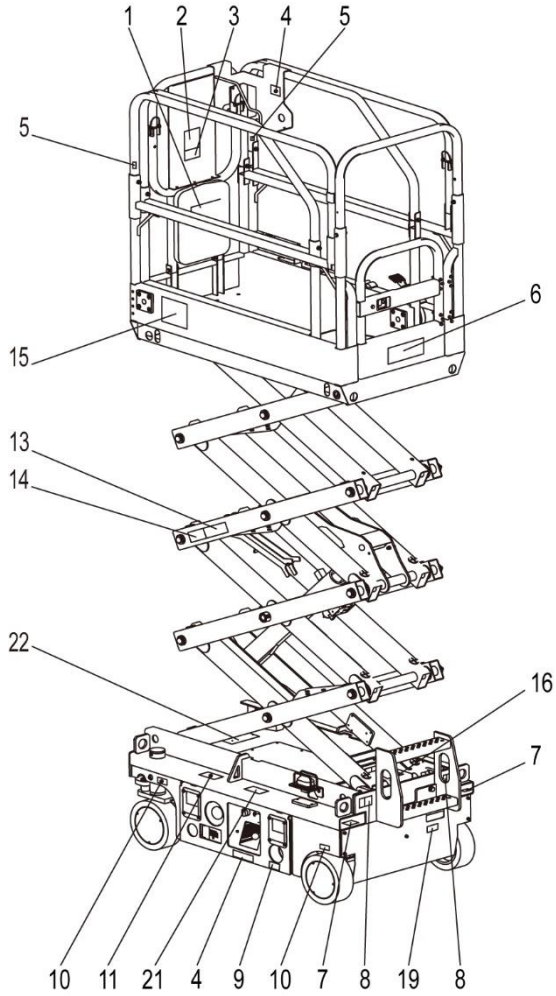
Platform Gate



**Platform Gate**

NO.	Material No.	Item and Spec	Units	Remark
1	00775600101810000	Platform Gate Weldment	1	
	00775200101010000	Platform Gate Weldment (ZS1530 Series only)	1	
2	00775600101801020	Spring	1	
3	00775600101801010	Key cylinder	1	
4	1040200503	Nut M8-8	1	GB/T889.1-2000
5	1040300066	Washer 8	1	GB/T97.1-2002
6	1040000469	Bolt M8×55	1	GB/T5783-2000

## ZS1530 Series Decal Installation



## ZS1530 Series Decal Installation

NO.	Material No.	Item and Spec	Units	Remark
1	00775307080402040	Label- Store the Operation and Safety Manual	1	
2	00775207010403010	Label- Safety Rules	1	
3	00775207010403070	Danger- Tip-over Hazard	1	
4	00775307080402030	Label- Read the Instructions Carefully	2	
5	00775307080202090	Label- Lanyard Anchorage Point	4	
6	00775207010203030	Label- Capacity, 240kg	1	
7	00775307080202210	Label- Forklift Hole	2	
8	00775307080202010	Label- Lifting and tying	4	
9	00775307080402150	Label- Emergency Lowering	1	
10	00775207010403040	Label- Wheel Load, 390kg	4	
11	00775307080402110	Instruction- Main Power Switch Operation	1	
12	00775307080402060	Danger- Explosion and Fire Hazard	1	
13	00775207010403020	Danger- Crushing Hazard	3	
14	00775207010403060	Label- Safety Arm	2	
15	00775307080402170	Label- Max Manual Force	1	
16	00775207010403050	Danger- Tip-over Hazard	1	
17	00775307080402130	Label- Pre-operation Inspection	1	
18	00775207020201020	Label- Lithium-ion Battery (ZS1530DC-Li only)	1	
19	00775307080401060	Label- Platform Power Rated Voltage	1	
20	00775307080401050	Label- AC Power to Platform	1	
21	00775307080202140	Label- Charger Power Supply	1	
22	00775609900401040	Nameplate	1	
23	00775307080401080	Label- non-insulated	1	